

Enjoy this issue as you explore principles and practices that support the living landscape.

February



**Advocating for ecological landscape practices
through education, collaboration, and outreach.**

From the Editor

ELA celebrates its [25th Annual Conference & Eco-Marketplace](#) next month. Though format and location have changed through the years, the Conference continues to feature top rate speakers, passionate attendees, and dedicated sponsors and exhibitors. We're honoring this milestone by recognizing our members. If you're attending the conference, be sure to stop by the membership table and pick up a pin. Have you been a member 5 years? 10 years? Pick the pin that matches your engagement with ELA and take a minute to share your story about how you became involved with ELA. We'll feature member stories over the next several months. If you can't make it to the Conference, we still want to hear your story. [Send us an email](#). Check ELA News for additional ELA social events.



Articles this month give us a look at a few more of the 2019 conference presentations. We look at urban forests and at stormwater solutions. We also see how one environmental designer is using three-dimensional models to great advantage. Only a few days remain for early registration discounts. Join us at the conference to catch presentations by our newsletter authors. Brush up on the latest developments in ecological land care, network with exhibitors and your peers, and discover more ways to sustain the living landscape area. *MPS*



The Birds and the Trees: Managing the Urban Forest for Wildlife by Dr. Susannah Lerman

Trees and shrubs provide ecosystem services and societal benefits in urban and suburban environments. They also provide vital habitat for birds, pollinators, and other wildlife. A new tool correlates habitat requirements for songbirds, evaluates the bird habitat potential at ecoregion scales, and can guide habitat improvement plans. [Read the article](#). Dr. Lerman presents on the same topic Wednesday, March 6, at [ELA's 25th Conference & Eco-Marketplace](#).



Ten Reasons to Make Hand Built Three-Dimensional Models

by Bryan Quinn

Showing examples of previous work can get a client to consider other visions. Another option, build a three-dimensional site model. The author shares ten reasons he advocates for 3-D models and shares how his company incorporates model building into their projects. [Read the article.](#)

Mr. Quinn presents "The Role of Landscape in our Global Environmental Crisis" Thursday, March 7 at [ELA's 25th Conference & Eco-Marketplace.](#)

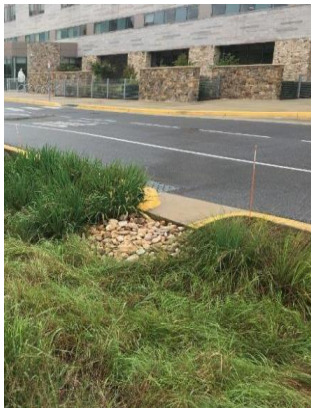


Greening Greenfield

by Julie Snell and Michele Adams

Albert Greenfield Elementary School in Philadelphia was the first school in the district to implement a "green schoolyard." This project was an early example of how public landscapes in the city can offer significant connections to the natural world, benefiting students and the community. [Read the article.](#)

Ms. Adams and Ms. Snell present "Reconnecting Water, Soils, and Vegetation: Green Infrastructure in the Urban Environment" Wednesday, March 6 at [ELA's 25th Conference & Eco-Marketplace.](#)



Sustainable Stormwater Using Bioretention: Engineering Better Water Quality

by Dr. Allen P. Davis

As (sub)urban growth continues to consume undeveloped land, stormwater runoff from impervious surfaces grows in importance as a contributor to water resources degradation. Bioretention is promoted as a low-impact stormwater management practice to mitigate impacts of impervious surfaces. Learn how bioretention can most effectively treat pollutants. [Read the article.](#)

Dr. Davis presents on the same topic Wednesday, March 6 at [ELA's 25th Conference & Eco-Marketplace.](#)

ELA News

ELA Winter Social

Break your dormancy and gather with other ELA members to share a meal or a drink on Wednesday, February 20. Come alone, or better yet, bring a friend who might enjoy the ELA Community.

Boston Area

Wednesday, February 20, 6:30-9:00pm

[American Fresh Brewhouse & Taproom](#)

Assembly Row, 490 Foley Street, Somerville, MA 02145

American Fresh has a full [menu](#) and free 3-hour parking is available in the garage next door. Send your RSVP to rie@ecolandscaping.org by February 15 so we can ensure we have enough room for everyone.

Third Celebrating Native Plants Tour!

Showcase your native plant garden on ELA's [Third Annual Celebrating Native Plants Garden Tour](#). Whether it's a garden you've nurtured and maintained over decades or just installed at your own or a client's property, ELA invites you to share your passion for native plants on **Saturday afternoon June 22**. Registered guests will visit gardens around Massachusetts to share, discuss, and discover the beauty and ecosystem value of native plants. (Hosts determine the number of visitors.) Take advantage of this opportunity to inspire greater use of native plants.

[Learn more here and add your garden to the growing list](#)

Conway School Pre-Conference Get Together

Don't miss the fourth annual gathering of Conway alums on March 5, the evening before the 2019 ELA Conference & Eco-Marketplace!

Time: 7:00-9:00pm

Location: High Horse Brewery and Bistro, 24 N. Pleasant St., Amherst

Co-hosts: Theresa Sprague '08, Board Member, ELA and Conway School; Rie Macchiarolo '14, ELA Vice President; and Elaine Williamson, Conway Alum Liaison

Join ELA for Virtual Coffee, February 20

Have you spent the last couple of months new design books and attending lectures? Share what you've learned! Did you come across a book you think other ELA members would enjoy? Have you heard about a speaker or discovered a topic that ELA should know about? Give us a call on Wednesday, February 20 between 12:30pm and 1:00pm. Email ahead to ela_new@verizon.net for the call in number.

2019 Conference & Eco-Marketplace Is Sold Out!

Sponsors:

[ACF Environmental](#) -- Speaker Sponsor

[OESCO](#) -- Speaker Sponsor

[Planters' Choice Nursery](#) -- Breakfast Sponsor

Exhibitors:

- [Amherst Nurseries](#) - [Bigelow Nurseries](#) - [Casella Organics](#) -
- [Chesapeake Conservation Landscaping Council](#) - [City Compost](#) - [COGdesign](#) -
- [Compostwerks LLC](#) - [Conway School](#) - [EJ Prescott](#) - [Ernst Seeds](#) -
- [Essex Horticulture](#) - [Filtrexx](#) - [Fourth Generation Nursery, Inc.](#) -
- [Green Earth Ag & Turf](#) - [Groundscapes Express, Inc.](#) -
- [Massachusetts Nursery and Landscape Association](#) -
- [North Creek Nurseries](#) - [Organic Mechanics Soil Co.](#) - [Pavers by Ideal](#) -
- [Read Custom Soils](#) - [SumCo Eco-Contracting](#) -
- [Van Berkum Nursery, LLC](#) -



Support ELA When You Shop - Sign Up with Amazon Smile!

amazon smile
You shop. Amazon gives.

**Each Amazon Purchase
Can Benefit ELA**

Gleanings

Australians Record Climate Change Effects

Led by a University of Melbourne professor, a team of academics and ecologist have released a paper detailing the land-based effects of climate change over several decades, uncovering flora diebacks and extinctions, insect booms, and out-of-whack orchids and butterflies. [Read more in ABC News Adelaide.](#)



New Analysis of Glyphosate Data Supports Cancer Link

A broad new scientific analysis of the cancer-causing potential of glyphosate, the most widely used weedkiller worldwide, has found that people with high exposures to the popular herbicides have a 41% increased risk of developing non-Hodgkin lymphoma. [Read more in The Guardian.](#)



How (and Why) Do You Move a 600,000 Pound Tree

Under a 2016 Washington D.C. law, any tree with a circumference of 100 inches or more is considered a heritage tree and cannot be removed. An alternative: moving the tree. [Read more and watch a clip at WAMU 88.5.](#)



Water Infrastructure Improvement Act Signed into Law

A new law codifies the US Environmental Protection Agency's Integrated Planning approach to clean water, providing local communities with critical new flexibility in meeting their Clean Water Act obligations. [Read more at NACWA.](#)



Restoring the Colorado

Yale Environment 360 wraps up its five-part series "Crisis on the Colorado" that explores issues faced by communities along the Colorado River as drought and water shortages continue. [Part 3](#) looks at conservation strategies being employed and [Part 5](#) looks at restoration efforts that are underway in both the U.S. and Mexico.

[Find the complete series here.](#)



New England Wild Flower Names New Director of Horticulture

New England Wild Flower Society, a national leader in native plant conservation, horticulture, and education, has named Uli Lorimer as its new Director of Horticulture. Lorimer is currently curator of the Native Flora Garden at Brooklyn Botanic Garden and will begin his new role in March. He will oversee both Garden in the Woods, the Society's botanic garden in Framingham, and Nasami Farm in western MA, a nursery focused on propagation of and research about New England native plants.

[Read more.](#)



MAA Arbor Day of Service, April 26

It's not too late to volunteer with MAA's day of service - this year at Appleton Farms. [Find more information.](#)



Green Industry Survey

UMass Extension is conducting a survey to get insight into the challenges facing the Green Industry in Massachusetts and requests your participation. Information will be used by researchers and UMass Extension Educators to develop research, create programming, and

provide an overview of the state of the industry. [Click to take the survey before February 28.](#)



Call for Designers

COGdesign has accepted eight projects for 2019 and is looking for volunteer designers to see the projects through to completion. Find more information on the [COGdesign website.](#)



Enjoy all the ELA Membership Benefits - including free and discounted events.
[Become a Member!](#)



New Directions in the American Landscape (NDAL) will hold an intensive two-day natural design workshop developed by Larry Weaner on Mar. 12-13 in Boylston, MA, Mar. 19-20 in Cornwall, NY, Mar. 26-27 in Chadds Ford, PA, and Apr. 2-3 in

Riverwoods, IL. This program will provide concrete, real world guidance for designing and documenting all phases of native landscape development. Topics covered will include plant selection criteria, plant recommendations, ecological process-based management specifications, and guidance for maximizing the aesthetic and experiential appeal these landscapes can provide. For more detail, visit our [digital brochure.](#)

Events to Note (listings indicate local time unless otherwise noted)

February

February 15 - Application deadline for June 3-9 [Waza to Kokoro: Hands and Heart](#), an intensive seminar in Japanese garden arts; Portland Japanese Garden, Portland, OR; 9:00am-5:00pm daily.

February 16 - [Ecological Gardening](#); West Stockbridge, MA; 10:00am-4:30pm.

February 16 - [Stormwater Ecology: A New Paradigm in Landscape Design](#); Mt. Cuba Center, Hockessin, DE; 11:00am-12:15pm.

February 19 - [Principles and Fundamentals of Weed Science](#); Milford, MA; 9:00am-2:30pm.

February 20 **ELA Webinar**→[Finding Common Ground - In Pursuit of "Sustainable Landscaping"](#); 12:30-1:30pm EST.

February 21 - [Landscaping Matters! Cities Helping to Reverse Pollinator Declines](#); Lake City, SC; 9:30am-4:15pm.

February 22 - [Tree Health Update](#); Hyannis, MA; 8:30am-2:00pm.

February 26-27 - [MNLA Green Industry Job Fair](#); Marlborough, MA.

March

March 1 - [The "R" Word: Retreat, Relocation, and Climate Resiliency](#); Boston, MA; 7:15am-11:45am.

March 1 - [The A-Z of Stormwater Management in the Landscape for Professionals](#); Oregon City, OR; 8:30am-5:00pm.

March 1 - [Massachusetts Certified Arborist Program: An Overview](#); Wellesley, MA; 9:00am-3:00pm.

March 1-2 - [Ithaca Native Plant Symposium](#); Ithaca, NY.

March 2 - [Massachusetts Association of Conservation Commissions Conference](#); Worcester, MA; 8:00am-4:00pm.

March 3 - [NOFA/RI Winter Conference](#); Bristol, RI.

March 5 - [Community Tree Conference: Species Selection in the Urban Landscape](#); Amherst, MA; 8:00am-3:00pm.

March 6 - [Sugar, Sex, and Poison: Understanding the Vital Powers of Plants](#); Cambridge, MA; 7:00-8:30pm.

March 6-7 **ELA Conference**→[ELA Conference & Eco-Marketplace](#); Amherst, MA.

March 7 - [Pollinator Best Practices Summit 2019](#); St. Anthony, MN; 8:00am-12:30pm.

March 8,15,22,29 - [Enhancing Life in the Soil](#); Mt. Cuba Center, Hockessin, DE; 10am-2:30pm.

March 12 - [Pollinator Plants Workshop](#); New London, CT; 6:30-8:00pm.

March 12-13 - [Natural Design Workshop](#); Boylston, MA; 8:30-4:30 both days.

March 14 - [State Regulations Pertaining to Invasive Plant Management](#); Milford, MA; 9:00am-3:00pm.

March 14 **ELA Webinar**→[Missouri and the New Tallgrass Prairie Economy](#); 1:00-2:00pm EST.

March 16 - [Unlocking the Mystery of Native Orchids](#); Mt. Cuba Center, Hockessin, DE; 11:00am-12:15pm.

March 18-20 - [International Biomass Conference & Expo](#); Savannah GA.

March 19 - [The Invasive Plant Issue and Invasive Plant Identification](#); Milford, MA; 9:00am-2:00pm.

March 21 **ELA Class**→[Right Plant, Right Place: Introduction to Choosing Native Plants](#); Framingham, MA; 6:30-8:30pm.

March 22 - [Creating a Yard with Buzz](#); Mt. Cuba Center, Hockessin, DE; 10:00am-12:00pm.

March 23 - [Enhancing Community Through the Land: MassLand Conference](#); Worcester, MA; 8:00am-4:00pm.

March 28-30 - [6th Fabos Conference on Landscape and Greenway Planning](#); Amherst, MA.

March 29 - [Shaping the Future of Sustainability](#); Cambridge, MA; 8:00am-4:00pm.

March 30 & April 6 - [Soil, Plant, and Farm Methodology Course](#); Providence, RI; 3:00-7:30 both days.

April

April 3 - [More than Just the Buzz: Finding Real Solutions to Native Pollinator Declines](#); Cambridge, MA; 7:00-8:30pm.

April 3 **ELA Class**→[Sustainable Site Design](#); Garden in the Woods, Framingham, MA; 10:00am-3:30pm.

April 9 - [Developing an Invasive Plant Management Program](#); Milford, MA; 9:00am-2:30pm.

April 11-May 16 - [Native Plants of Spring](#); Mt. Cuba Center, Hockessin, DE; 10:00am-12:00pm on Thursdays.

April 12 **ELA Class**→[Shade Gardens: Embracing the Dark Side](#); Garden in the Woods, Framingham, MA; 9:30am-12:30pm.

April 13 **ELA Class**→[Tips and Techniques for Healthy Seedling Starts](#); Nasami Farm, Whately, MA; 10:00am-1:00pm.



Landscape Project Manager/Estimator, a Yard & a Half Landscaping Cooperative

Join our team! This position is owner-track and available now until filled. We are looking for individuals who are enthusiastic to share new ideas, enjoy a challenge, take pride in their work, and are excited about worker-ownership. [Find the complete job description on our website.](#)

Native Plant Nursery Manager/Horticulturist, Helia Native Nursery, West Stockbridge, MA

We are seeking a qualified individual to be responsible for all stages of the nursery's planning, preparation, the growing and maintenance of superior quality native plants. The position requires a qualified candidate to be in charge of all facets of nursery work including, plant care, propagation, seed harvesting, care of a native seed bank, and customer

service. Applicants must be passionate about the production and care of native plants. 3+ years of experience in nursery, farming, and/or a Degree in Horticulture preferred. Individuals should have a solid understanding of plant care and basic propagation techniques, as well as a strong ability to identify native herbaceous perennials, grasses and ferns. Kindly submit a resume, cover letter and list of references to: Helia Native Nursery, 95 East Road, Suite 1, West Stockbridge MA 01266 or helianativenursery@gmail.com.

Program Coordinator, Southwest Boston CDC Green Team

The Green Team Program Coordinator works under the direction of the Southwest Boston Community Development Corporation and has primary responsibility for administering all aspects of the Green Team program. Learn about the Green Team at www.swbccdc.org. Contact Patricia Alvarez for additional information: palvarez@swbccdc.org.

Crew Leader, Southwest Boston CDC Green Team

The Crew Leader trains, works alongside, and supervises Green Team youth as they work in the landscape, conduct community outreach, and clean and beautify Hyde Park's central business district. Learn about the Green Team at www.swbccdc.org. Contact Patricia Alvarez for additional information: palvarez@swbccdc.org.

Each author appearing herein retains original copyright. Right to reproduce or disseminate all material herein, including to Columbia University Library's CAUSEWAY Project, is otherwise reserved by ELA. Please contact ELA for permission to reprint.

Mention of products is not intended to constitute endorsement. Opinions expressed in this newsletter do not necessarily represent those of ELA's directors, staff, or members.

Whether you are located in the area of our upcoming events or in some distant landscape, you are invited to participate in ELA collaborations and discussions by joining the Ecological Landscape Alliance discussion group on LinkedIn. The ELA discussion group is open to both ELA members and non-members from around the world and participation is growing each week. Through these discussions you can share information, get answers to landscape problems, and learn new perspectives on challenging ecological issues. Joining LinkedIn is free and it is easy to join. [Join the ELA LinkedIn Discussion](#). We look forward to hearing from you soon!

We hope that you enjoy this edition of the ELA newsletter and welcome your comments at ela.info@comcast.net. *Maureen Sundberg, ELA Newsletter Editor*

[Visit Our Website](#)

Ecological Landscape Alliance | 617-436-5838 | ELA.info@comcast.net | WWW.Ecolandscaping.org

STAY CONNECTED:

