

Enjoy this issue as you explore principles and practices that support the living landscape.

January 2018



Advocating for ecological landscape practices
through education, collaboration, and outreach.

From the Editor

After ten months of planning, seven weeks remain before ELA's 24th Conference & Eco-Marketplace, scheduled for March 7 & 8 in Amherst. The full [conference brochure](#) is on the ELA website and early registration is open. You'll enjoy steep discounts to this annual favorite by becoming an ELA member, plus you'll benefit from year-round discounts and special invitations. This year, your ELA membership gets you free admission to the [Zube Lecture Series](#) at UMass Amherst, beginning January 25 with Claudia West's presentation: [Wild and Neat: Bridging the Gap between Great Planting Design and Ecology](#).

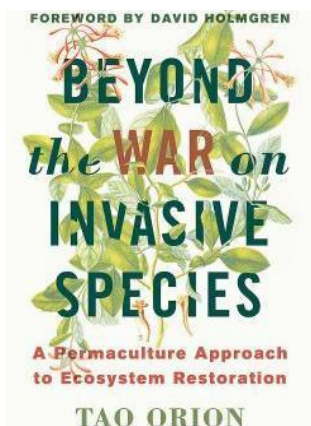
This issue of the ELA Newsletter highlights a few ELA Conference speakers and presentations. We offer several articles that touch on the role of our landscapes in sequestering carbon. We also look at steps for successful native seed propagation and pest management using beneficial insects. Enjoy the articles, and then be sure to check out the conference sessions to discover more opportunities for sustaining the living landscape. *MPS*



Gardening, Healthy Soil, and Carbon Sequestration

by Adrian Ayres Fisher

We have a short window of opportunity to solve global warming. One crucial part of the solution: carbon sequestration through carbon-focused land-management techniques, many already in use, applicable on every scale, regional to hyper-local, and in every kind of ecosystem. [Read the article](#). Adrian Ayres Fisher presents "Backyard Carbon Sequestration" on March 7 at [ELA's Conference & Eco-Marketplace](#).



Watershed Restoration

by Tao Orion

Aquatic ecosystems have been largely mismanaged, and the growth of invasive species demonstrates the lack of appropriate interaction with these valuable natural resources and the ecological services they provide. Invasive species proliferate in polluted, nutrient-enhanced, or otherwise compromised waterways. They also exist in ecosystems that appear intact, though historic analysis can tell a different story. [Read the article](#).

Tao Orion presents "Beyond the War on Invasive Species: A Permaculture Approach to Ecosystem Restoration" on March 8 at [ELA's Conference & Eco-Marketplace](#).



Sowing Native Seed

by Heather McCargo

The seeds of wild plants have a different set of needs than those of common garden and vegetable species. However, an understanding of the specific requirements for successful propagation and knowledge of some propagation techniques will help assure success. [Read the article.](#)

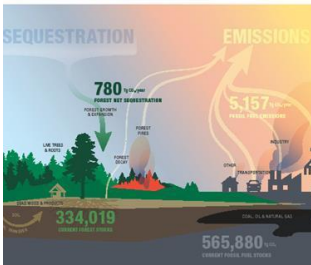
Heather McCargo presents "Understanding and Sowing Seeds," a demonstration workshop, on March 8 at [ELA's Conference & Eco-Marketplace.](#)



Conference: Session Snapshot Managing Land for Pollinators and Conservation Biocontrol

by Emily May

Conservation biological control is a science-based pest management strategy that seeks to integrate beneficial insects back into the landscape for natural pest control, ultimately reducing and possibly eliminating the need for pesticides. Providing food and shelter for pollinators and other beneficial insects boosts populations of these insects and the important pollination and pest control services they provide. [Read more.](#) Emily May presents "Managing Land for Pollinators and Conservation Biocontrol" on March 7 at [ELA's Conference & Eco-Marketplace.](#)



Conference: Session Snapshot Tree Carbon in Forests and Urban Environments...Concepts and Trajectories

by Dr. Christopher Woodall

There are three important words when it comes to the current status and future of the greenhouse gas induced warming of our planet and our terrestrial systems: carbon, carbon, and carbon. [Read more.](#)

Christopher Woodall presents with Dr. David Bloniarz "Capturing Carbon with Trees" on March 7 at [ELA's Conference & Eco-Marketplace.](#)



ELA News

Lend Your Skills to ELA

Looking for a satisfying volunteer opportunity? Have a few hours to donate each month? Join ELA's team of dedicated volunteers. You can serve on a committee, volunteer at an event in your area, share your expertise in the newsletter, or find a project that matches your skills. Volunteers keep ELA growing and providing ecologically-focused education and networking events for professionals. Email ela.info@comcast.net and ask for a board member to contact you.

Opportunity for ELA Members

ELA members are invited to attend, for free, Claudia West's presentation [Wild and Neat: Bridging the Gap between Great Planting Design and Ecology](#) on January 25 at UMass Amherst. Her talk is part the [2018 Erv Zube Lecture Series](#) through the Department of Landscape Architecture and Regional Planning.

24th Conference: Sustaining the Living Landscape

March 7 & 8, UMass Amherst Conference Center

At the [24th Annual ELA Conference & Eco-Marketplace](#), become immersed in a two-day exploration of ecological concepts as our speakers share their experiences and expertise. Delve into this year's wide-ranging topics as we look at the principles and practices we need to design, build, and restore the living landscape.

March 7 includes your choice of two full-day workshops

Designing for Carbon Sequestration or
Maximizing Landscape Productivity and Potential

Plus optional **Keynote Dinner** address by Professor Darrel Morrison: *Landscape Design as Ecological Art*

March 8 features twelve unique sessions, including

- * Creating wildlife habitat in urban areas
- * Exploring the value of weeds in urban ecology
- * Mimicking nature's patterns and processes in the designed landscape
- * Restoring ecosystems with a permaculture approach
- * Designing with our intuitive side

Refer to the online [conference brochure](#) for the complete list of sessions, session descriptions, and speaker bios.

Opportunities for Exhibiting, Sponsoring, and Advertising!

Join the growing list Eco-Marketplace **exhibitors** at the 24th ELA Conference. Elevate your conference presence by becoming a conference sponsor. [All sponsorship levels available online.](#)

Prefer print? Advertise in the conference program. Contact: MichaelOpton@gmail.com.

2018 Conference Exhibitors and Sponsors

[Amherst Nurseries](#)

[Fourth Generation Nursery](#)

[Green Earth Ag & Turf](#)

[Merrimack River Watershed Council](#)

[Planter's Choice \(Lunch Sponsor\)](#)

[Read Custom Soils](#)

Enjoy all the ELA Membership Benefits - including free and discounted events!
[Become a Member!](#)



24th Annual ELA Conference & Eco-Marketplace

March 7 & 8, 2018 – UMass Amherst

Immerse yourself in ELA's two-day conference!

March 7th Two all-day workshops:
Designing for Carbon Sequestration and Methods of Maximizing Landscape Productivity and Potential
Keynote address: **Professor Darrel Morrison, FASLA**

March 8th Three Rooms of Presentations

- The Intuitive Side of Design • Do weeds have value??
- Mimicking Nature's Patterns and Processes • Urban Wildlife Habitat
- Permaculture for Ecosystem Restoration and much more...

[Read the brochure and Register Early for Discounts!](#)



Gleanings

Information Sessions at Planter's Choice

Fridays between January 19 and February 23, Planter's Choice Nursery, Newtown, CT, will host an Informational Open House that introduces a new topic each session. For more information and to register, call 203-426-4037 or email Dave at dgindek@planterschoice.com.



Water Efficient Landscaping

Utah State University's Center for Water Efficient Landscaping (CWEL) kicked off its 2018 webinar series on January 9. On the second Tuesday of each month at 2:00pm MST additional presenters will share their experience with and expertise in outdoor water conservation. Topics will include outreach and education efforts, new technologies, program impacts, etc. Learn more at <http://cwel.usu.edu/webinars>. If you are interested in presenting, [click here](#).

The first webinar, Using Interactive Web-based Tools to Increase Outreach Efforts, features online education programming for the city of Plano, TX. The presentation details one online learning module, "Water, Water Everywhere: A Guide to Sprinkler Repair." This module helps users identify and repair common irrigation problems and also provides instruction on a water-efficient "cycle and soak" method for irrigation.



Habitat on the Edges: Making Room for Wildlife in an Urbanized World

Efforts to protect biodiversity are now focusing less on preserving pristine areas and more on finding room for wildlife on the margins of human development. As urban areas keep expanding, it is increasingly the only way to allow species to survive. Read the article in [Yale Environment360](#).



URI Seed Program for 2018

The University of Rhode Island Cooperative Extension is offering free seeds to individuals, schools, and other organizations in New England again this year. Also, a seed starting workshop will be held at East Farm on Saturday, January 27 from noon to 1:00pm. Find more information [here](#).



Grants!

CSX Community Investment

CSX provides assistance and support to non-profits in communities that are part of their network. Focus areas are Safety, Community, Environment, and Wellness. Find details through the CSX [Giving Gateway](#). Online applications are available January 1 - December 15 each year; no deadlines apply.

MA Recreational Trails Grants

The Massachusetts Recreational Trails Program provides annual grant funding for the construction and maintenance of trails and trail-related facilities across the state. The next round of applications is due February 1, 2018. [Find out more here](#).



Events to Note (listings indicate local time unless otherwise noted)

January 17 **ELA Webinar**→[Transitioning to Ecological Landscape Practices - Toxin-free Landscapes](#); 4:00-5:00pm EST.

January 18&19 - [Landscape Design Symposium](#); New London, CT.

January 24 **ELA Webinar**→[Invasive Plants: What Are They? And What Can Be Done?](#); 7:00-8:00pm EST.

January 25 **ELA Member Event**→[Claudia West: Wild and Neat: Bridging the Gap between Great Planting Design and Ecology](#); 4:00pm.

January 27 - [Information Session at the Conway School](#); Easthampton, MA; 10:00am-1:00pm.

January 30 - [Natural Gas Infrastructure and Public Health](#); Boston, MA; 10:00am-5:00pm.

January 31 - [National Stormwater Calculator for Managing Runoff Using Green Infrastructure: Addition of a Cost Module and a Mobile Web Application Version](#); webinar; 2:00-3:00pm EST.

February 1 **ELA Webinar**→[Landscape Maintenance Practices for Native Bees](#); 4:00-5:00pm EST.

February 3 - [Climate, Water, Soil and Hope: Soil Biology's Role in Public Health and Climate Resiliency](#); Essex, MA; 1:00-5:00pm.

February 3 - [2018 Mass Green Summit](#); Emerson College, Boston, MA; 9:30am-4:00pm.

February 4 - [Collections Up Close: Conifer Collection](#); Boston, MA; 1:00-3:00pm.

February 6 **ELA Event**→[Designing Gardens for Small Spaces](#); Framingham, MA; 8:30am-12:00pm.

February 6 - [Landscape Safety Conference](#); Milford, MA; 8:30am-3:30pm.

February 7 **ELA Webinar**→[Green Up for Clean Up: Planting to Remediate Contaminated Landscapes](#); 12:30-1:30pm EST.

February 7 - [The Beautiful Adaptations of Native Plants: Inviting the Wild into our Gardens](#); Cambridge, MA; 7:00-8:30pm.

February 7-March 14 - [Garden Design Workshop for Home Gardeners](#); Boston, MA.

February 8 - [Natural Burials Symposium](#); Plymouth, MA; 9:30am-3:00pm.

February 16 - [Healthy Landscape Principles and Practices: Pesticide-free Strategies for the Landscape Professional](#); Oregon City, OR; 9:00am-5:00pm.

February 21 - [Principles and Fundamentals of Weed Science](#); Hadley, MA; 9:00am-2:30pm.

February 24 **ELA Webinar**→[Native Plants for Urban Design](#); 10:00-11:00am EST.

March 3 - [Creating a Resilient Garden](#); Kingston, RI; 8:30am-4:00pm.

March 3 - [Edible Landscaping with Fruit](#); Amherst, MA; 10:00am-12:00pm.

March 6 - [Community Tree Conference: Ecological Perspectives of the Urban Forest](#); Amherst, MA; 8:45am-3:30pm.

March 7&8 **ELA Conference & Eco-Marketplace**→[Sustaining the Living Landscape](#); Amherst, MA.

March 7 - [Lessons Learned when Field Botany Meets Design](#); Cambridge, MA; 7:00-8:30pm.

March 10 **ELA Event**→[Native Plants for Landscape Design](#); Framingham, MA; 10:00-11:00am.

March 19 **ELA Webinar**→[Developing a Comprehensive Integrative Pest Management \(IPM\) Plan](#); 12:30-1:30pm EST.

March 22 - [The Invasive Plant Issue and Invasive Plant Identification](#); Hadley, MA; 9:00am-2:00pm.

March 24 - 2018 MA Land Conservation Conference; Worcester, MA; 8:00am-4:00pm. Save the Date.

March 24 - [Home Orchard Pruning](#) (hands on); Great Barrington, MA; 10:00am-1:00pm.

March 29 - [Spring Kickoff for Landscapers](#); Wareham, MA; 8:30am-3:30pm.

March 31 - [Pruning Blueberries](#) (hands on); Bolton, MA; 10:00am-12:00pm.



Bunchberry *Cornus canadensis*

Planters' Choice Nursery

New England's premier grower and re-wholesaler of quality nursery stock including a full line of native trees, shrubs and perennials

Newtown, CT Watertown, CT
203-426-4037

Planterschoice.com

Each author appearing herein retains original copyright. Right to reproduce or disseminate all material herein, including to Columbia University Library's CAUSEWAY Project, is otherwise reserved by ELA. Please contact ELA for permission to reprint.

Mention of products is not intended to constitute endorsement. Opinions expressed in this newsletter do not necessarily represent those of ELA's directors, staff, or members.

Whether you are located in the area of our upcoming events or in some distant landscape, you are invited to participate in ELA collaborations and discussions by joining the Ecological Landscape Alliance discussion group on LinkedIn. The ELA discussion group is open to both ELA members and non-members from around the world and participation is growing each week. Through these discussions you can share information, get answers to landscape problems, and learn new perspectives on challenging ecological issues. Joining LinkedIn is free and it is easy to join. [Join the ELA LinkedIn Discussion](#). We look forward to hearing from you soon!

We hope that you enjoy this edition of the ELA newsletter and welcome your comments at ela.info@comcast.net. *Maureen Sundberg, ELA Newsletter Editor*

[Visit Our Website](#)

Ecological Landscape Alliance | 617-436-5838 | ELA.info@comcast.net | WWW.Ecolandscaping.org

STAY CONNECTED:

