

studioverde
landscape architecture + design

11.02.04: garden design concepts for new pavilion on rocky glassed out wall
Re-interpretation of Dry River Design

A dry stream translation of the Handwashing Stream.

- Retain LED lighting that sits low to the river to give the most glowing space adjacent to river of dark to neutral. Rock plants to be reflected in glass and to use wall as backstop for the river as well as a backdrop element.
- For a horizontal granite feature below that will have the enhanced with low LED lighting elements.
- Medium horizontal stone placed across "flow" as to narrow suggest the natural tendency of flow forces to create variation in the flow flow and elevation.
- Use of large boulders to provide balance in plan, suggest the texture of a stone wall.
- Utilizing granite of various and soft lighting.
- Photos also suggest dark stone with lots of texture as the major stone for the canal.

USE HAND DRAWINGS COMBINED WITH REFERENCE PHOTOGRAPHS AND NOTES TO COMMUNICATE EARLY CONCEPTS OR DESIGN OPTIONS

Margaret Chase Smith Federal Building Entrance
Proposed Garden Alcove Design Plan
Illustration and Description of Features
6/24/2013

Note: See detail plan and elevation drawings for more and appropriate quantities of stone materials.

Dry River Bed Feature: 1'-2" Bank Run local river pebbles (see reference photos and notes).

Gravel River opening (at granite walls): Add 10 low-maintenance plantings (2 each side) and 2-foot well-rounded stone (small boulders) to discourage access.

Stone Dry Edge: 18-inch black fractured slate stone (material per original specifications).

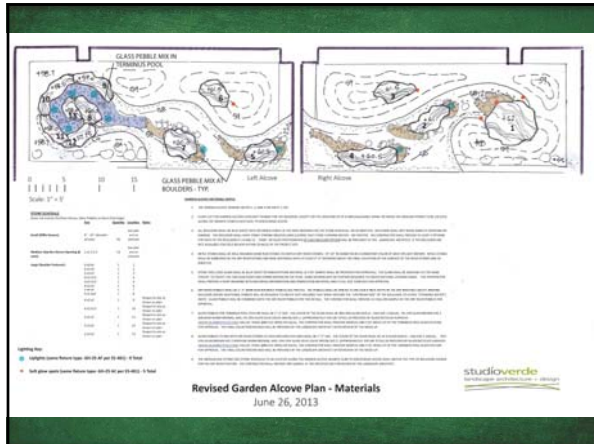
Little Stone-Glass Pebble Boulder Accents: Embed 10 to 12-inch well-rounded stones in garden circulation water offset around rocks to provide interest and suggest light and movement. (see reference photos and notes).

Dry River Boulder: Embed large blue chert boulders with strong visible grain layers to enhance water theme and evoke natural river boulders. (see reference photos and notes).

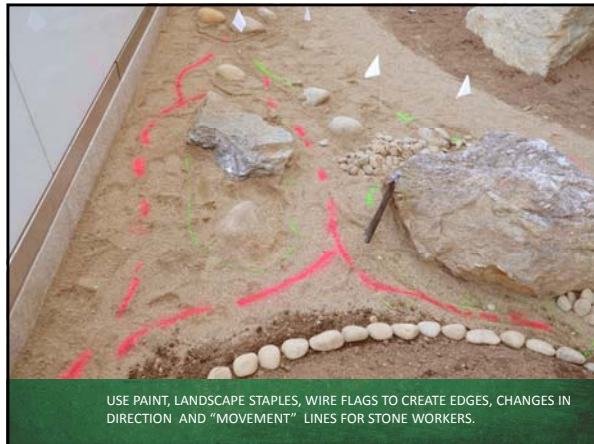
Terminal Feature: Embed 1 large standing stone in center combined with 5 larger flat stones, stones to match blue chert or similar cut and/or hand-hewn to create circular feature with soft natural edges. Add a mixture of colored glass pebbles with uplighting in open low area between large flat stones. (see reference photos and notes).

Apex Feature: Embed 1 very large "standing stone" boulder with strong visible strata layers to evoke water falling over rock. Add offset stones and glass pebble accents at base of boulder per description in this sheet (see reference photos and notes).

studioverde
landscape architecture + design










SHEET MOSS PINNED TO BURLAP SOCK FILLED WITH SOIL MEDIUM



NATIVE SODS PROVIDE INSTANT COVERAGE AND VISUAL IMPACT



Lisa Cowan, PLA, ASLA
LCowan@StudioVerdeLandscape.com
WWW.StudioVerdeLandscape.com
Studioverde on Facebook!

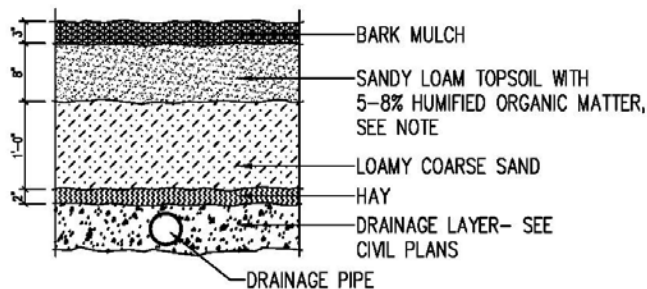
Irene Brady Barber
Greenscape Designs
irenebarber@gmail.com

MCSMITH STUDIOVERDE SAMPLE MATERIALS NOTES:

1. ALL BOULDERS SHALL BE BLUE SHEIST WITH ROUNDED EDGES, IN THE SIZES PROVIDED ON THE STONE SCHEDULE, OR AS DIRECTED. BOULDERS SHALL NOT SHOW SIGNS OF SCRAPING OR DAMAGE. THE BOULDERS SHALL HAVE VISIBLY STRONG SINUOUS LINES (LAYERS) THAT EVOKE FLOWING WATER – SEE PHOTOS.
2. RIFFLE STONES SHALL BE WELL ROUNDED BANK RUN STONES (TO MATCH DRY RIVER STONES) – 8”-10” IN DIAMETER IN A CONSISTENT COLOR OF GRAY OR LIGHT BROWN. RIFFLE STONES SHALL BE EMBEDDED IN THE DRY RIVER STONES AND BASE MATERIALS WITH AT LEAST 4”-6” SHOWING ABOVE THE FINAL ELEVATION OF THE SURFACE OF THE RIVER STONES AND AS DIRECTED.
3. STONE POOL EDGE SLABS SHALL BE BLUE SHEIST OR SIMILAR STONE MATERIAL (A 2’X2’ SAMPLE SHALL BE PROVIDED FOR APPROVAL). THE SLABS SHALL BE MACHINE CUT OR HAND TOOLED TO CREATE THE CIRCULAR EDGES AND FORMS SHOWN ON THE PLAN. HAND SHAPING MAY BE FURTHER REQUIRED TO CREATE NATURAL-LOOKING EDGES. THE CONTRACTOR SHALL PREPARE A SHOP DRAWING WITH MATERIALS INFORMATION AND FABRICATION METHODS, AND A FULL SIZE TEMPLATE FOR APPROVAL.
4. DRY RIVER PEBBLES SHALL BE 2” BANK RUN ROUNDED PEBBLES (SEE PHOTO). THE PEBBLES SHALL BE HAND PLACED, WITH NO GAPS, TO SIMILATE FLOWING WATER., THE LANDSCAPE ARCHITECT SHALL MARK AREAS WHERE STONE ORIENTATION SHALL CHANGE TO SIMULATE RIFFLES AND STANDING WATER. THE CONTRACTOR SHALL PROVIDE A 5-GALLON SAMPLE OF THE DRY RIVER PEBBLES FOR APPROVAL.
5. GLASS PEBBLES FOR TERMINUS POOL FEATURE SHALL BE 1”-2” SIZE. THE COLOR OF THE GLASS SHALL BE 80%-90% GLASS SHIELD – AAG SIZE 2 (AQUA); 5%-10% GLASS BROWN SIZE 2 (MEDIUM WARM BROWN); AND, 5%-10% GLASS OLIVE (OLIVE GREEN) SIZE 2, (APPROXIMATELY 550 LBS TOTAL) AS PROVIDED BY GLASS RECYCLED SURFACES (WWW.GLASSRECYCLED.COM; DALLAS, TEXAS; (888.523.7894)) OR EQUAL. THE CONTRACTOR SHALL PROVIDE SAMPLES AND 2’X2’ MOCK UP OF THE TERMINUS POOL GLASS FEATURE FOR APPROVAL. THE FINAL COLOR PERCENTAGES WILL BE PROVIDED BY THE LANDSCAPE ARCHITECT AFTER REVIEW OF THE MOCK UP.
6. GLASS PEBBLES TO MIX WITH DRY RIVER STONES AT EACH BOULDER FEATURES SHALL BE 1”-2” SIZE. THE COLOR OF THE GLASS SHALL BE 10 % GLASS SHIELD – AAG SIZE 2 (AQUA); 35%-55% GLASS BROWN SIZE 2 (MEDIUM WARM BROWN); AND, 35%-55% GLASS OLIVE (OLIVE GREEN) SIZE 2, (APPROXIMATELY 350 LBS TOTAL) AS PROVIDED BY GLASS RECYCLED SURFACES (WWW.GLASSRECYCLED.COM; DALLAS, TEXAS; (888.523.7894)) OR EQUAL. THE CONTRACTOR SHALL PROVIDE SAMPLES AND 2’X2’ MOCK UP OF THE TERMINUS POOL GLASS FEATURE FOR APPROVAL. THE FINAL COLOR PERCENTAGES WILL BE PROVIDED BY THE LANDSCAPE ARCHITECT AFTER REVIEW OF THE MOCK UP.

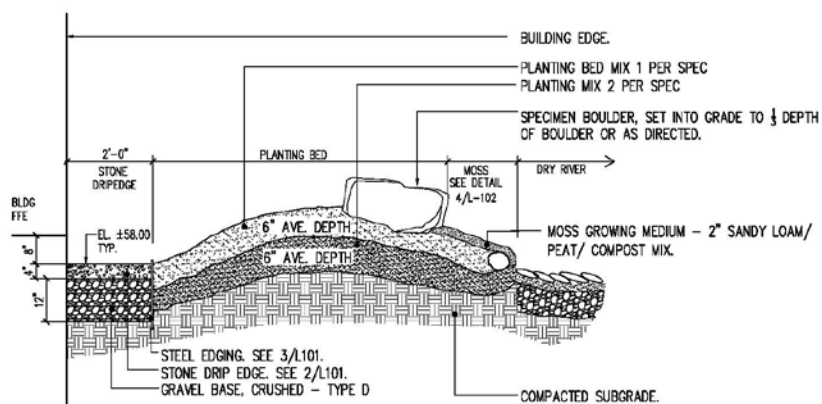
MC SMITH STUDIOVERDE SAMPLE SOIL MIXES FOR GARDEN ALCOVE

1. Two soil mixes are required:
 - 1) Base layer: two parts Sandy Loam to one part Compost.
 - 2) Top layer: one part Loam: one part Compost: one part Coir Dust
2. Each Sample shall be typical of the lot of material to be furnished; provide an accurate representation of color, texture, and organic makeup.



NOTE: SOIL MEDIA SHALL CONFORM TO CURRENT MaineDEP RECOMMENDATIONS FOR FILTRATION BASINS. THE CONTRACTOR SHALL PROVIDE DOCUMENTATION FOR APPROVAL PRIOR TO INSTALLATION. PRIOR TO PLANTING, THE CONTRACTOR SHALL INCORPORATE M-ROOTS (OR APPROVED EQUIVALENT) A SOIL MYCORRHIZAL ADDITIVE IN ACCORDANCE WITH MANUFACTURER RECOMMENDATIONS

6 SOIL MEDIA FOR INFILTRATION PLANTERS
L-101 SCALE 3/4"=1'-0"



6 PLANTING MOUND DETAIL
L-102 SCALE: 1/2"=1'-0"

ELEVATED RECTANGULAR TREE, SHRUB AND TURF BEDS

QTY	SYMBOL	BOTANICAL/ COMMON NAME	SIZE	CONDITION	NOTES
8	BET PLA	BETULA PLATYPHYLLA 'WHITESPIRE'	2" - 2 1/2" CAL	CONTAINER PLANT OR B&B	CONTAINER PREFERRED IF AVAILABLE
1	MALUS	TRANSPLANT EXISTING MEMORIAL TREE	APPROX 8-FOOT HEIGHT	EXISTING TO BE SALVAGED AND REPLANTED	PROVIDE TRANSPLANTING PLAN FOR APPROVAL PRIOR TO DEMOLITION OPERATIONS.
100	DIE LON	DIERVILLA LONICERA/ NORTHERN BUSH HONEYSUCKLE	2' - 2 1/2' HT/SPREAD/ 3 GAL	CONTAINER	
3000 SF	SOD	TURF-TYPE TALL FESCUE SOD	N/A	SOD	APPROVED LOW INPUT TALL FESCUE MIX ONLY
474	N/A	NARCISSUS/ ICE FOLLIES	PREMIUM	BULBS	DAFFODILS - CREAMY WHITE WITH LIGHT YELLOW CENTERS

ELEVATED SECURITY PLANTER BEDS

QTY	SYMBOL	BOTANICAL/ COMMON NAME	SIZE	CONDITION	NOTES
7	PAN VIR HM	PANICUM VIRGATUM HEAVY METAL/HEAVY METAL PANICUM	3GAL	CONTAINER	CENTER PLANTER
26	SPO HET	SPOROBOLUS HETEROLEPIS / PRAIRIE DROPSSEED	2 GAL	CONTAINER	SIDE PLANTER
34	SED AUT	SEDUM / AUTUMN DELIGHT	1 GAL	CONTAINER	CENTER - LEAVE SPACES FOR FALL TULIP PLANTING
25	TULIPS	TULIPA VIRIDIFLORA "CHINATOWN" / PINK TULIPS	PREMIUM SIZE	BULBS	CENTER PLANTER-IN BETWEEN SEDUM

GARDEN ALCOVES - WOODY PLANTS - SEE L102

QTY	SYMBOL	BOTANICAL/ COMMON NAME	SIZE	CONDITION	NOTES
9	ABI BAL	ABIES BALSAMEA 'NANA' / DWARF NORWAY SPRUCE	18-INCH HT/3 GAL	CONTAINER	
2	AME GRA	AMELANCHIER X GRANDIFLORA 'AUTUMN BRILLIANCE' / AUTUMN BRILLIANCE SHADBUSH	1.75" CAL-SINGLE STEM	CONTAINER	
3	FOT GAR	FOTHERGILLA GARDENII / DWARF FOTHERGILLA	2-FOOT HT/ 3 GAL	CONTAINER	
5	KAL ANG	KALMA ANGUSTIFOLIA / SHEEP LAUREL	2-FOOT/ 1 GAL	CONTAINER	PLANT 2 PER PLANT HOLE
8	LEU	LEUCOTHOE FONTANESIANA	3-FOOT SPREAD/ 3 GAL	CONTAINER	
4	MIC DES	MICROBIOTA DESCUSSATA/ CARPET CYPRESS	3-FOOT SPREAD/ 3 GAL	CONTAINER	
4	VIB CAS	VIBURNUM CASSINOIDES/ WITHEROD VIBURNUM	3-FOOT SPREAD/ 3 GAL	CONTAINER	

GARDEN ALCOVES - GROUNDCOVER, FERNS AND MOSSES - SEE L102

QTY	SYMBOL	BOTANICAL/ COMMON NAME	SIZE	CONDITION	NOTES
15	ATH FIL	ATHYRIUM FLIX-FEMINA/ LADY FERN	1 GAL	CONTAINER	NO MULCH ON FERNS, GROUNDCOVER, PERENNIALS IN GARDEN ALCOVES (TO ALLOW FOR SPREADING) FOR 2 YEARS UNLESS OTHERWISE DIRECTED.
82 SF	COR CAN	CORNUS CANADENSIS/ BUNCHBERRY	N/A	SOD	FROM A CERTIFIED COMMERCIAL SOURCE
65	POL APP	POLYPODIUM APPALACHIANA/ APPALACHIAN POLYPODY FERN	1 GAL	CONTAINER	
6	POL ACR	POLYSTICHUM ACROSTICHODES/ CHRISTMAS FERN	1 GAL	CONTAINER	
40	TIA COR	TIARELLA CORDATA/ FOAMFLOWER	1 QT	CONTAINER	
130 SF	POL COM	POLYTRICHUM COMMUNE/ HAIR CAP MOSS	MOSS 'SODS'	SECTIONS	FROM A CERTIFIED COMMERCIAL SOURCE. MOSSES SHALL NOT BE MULCHED.
160 SF	THU DEL	THUIDIUM DELICATULUM/ FERN MOSS	MOSS 'SODS'	SECTIONS	FROM A CERTIFIED COMMERCIAL SOURCE. MOSSES SHALL NOT BE MULCHED.