



Protecting Biodiversity: Prioritizing invasive plant control efforts

For more information contact: Julie Richburg, Regional Ecologist, The Trustees of Reservations. jrichburg@ttor.org

Invasive Plant Management: Guidelines for Managers. 2008. The Trustees of Reservations. This can be found on our website (www.thetrustees.org) by clicking on “What we care about” across the top menu bar, then “The Natural World”, and “Management Guidelines and Policies.”

http://www.thetrustees.org/assets/documents/what-we-care-about/Invasives-Plant-Guidelines-Final_Sep08.pdf

General Principles in Invasive Plant Management

- Prevention
- Early Detection and Rapid Response
- Control and Management
- Education and Public Awareness

Guideline for Prioritization of Invasive Plant Management:

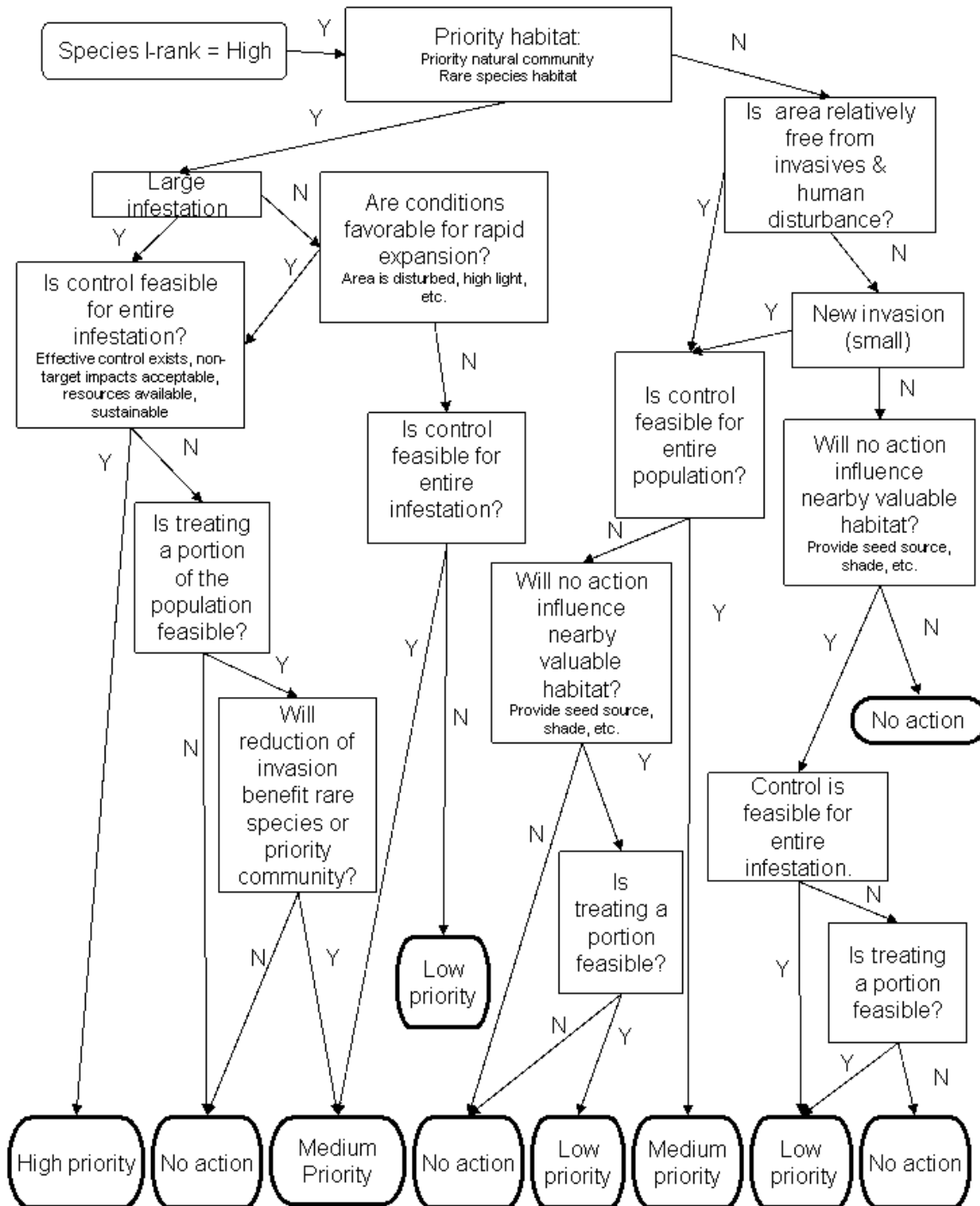
- Identify significant and important resources to protect. – What is important to YOU?
- Inventory properties to identify invasive species population sizes and locations. – Know what you are up against. The biology of the species will influence what can and cannot be done.
- Prioritize populations for management based on the significance of the resource you want to protect, the existence of effective control methods, the invasiveness of the species, and the potential for long-term control.
- Implement control and document your successes/failures.
- Reevaluate priorities based on your experiences with control and as new information and control methods are developed.

Sample chart to track decisions and control efforts

| Species | Prioritization Rank | Habitat/Location Size of population | Prioritization comments: feasibility, alteration to rank from flow chart, conservation target(s) | Suggested Control Method | Control comments: costs, expected non- target impacts, potential for long- term control | Year control initiated/ Year control complete | Acres controlled |
|-----------------------------|---------------------|--|--|-----------------------------|---|---|------------------|
| Species, population X | | | | | | | |
| Species, population Y | | | | | | | |

Sample flowchart

Explanations in Invasive Plant Management: Guidelines for Managers cited above.



No action = monitor, prevent further spread, and reevaluate