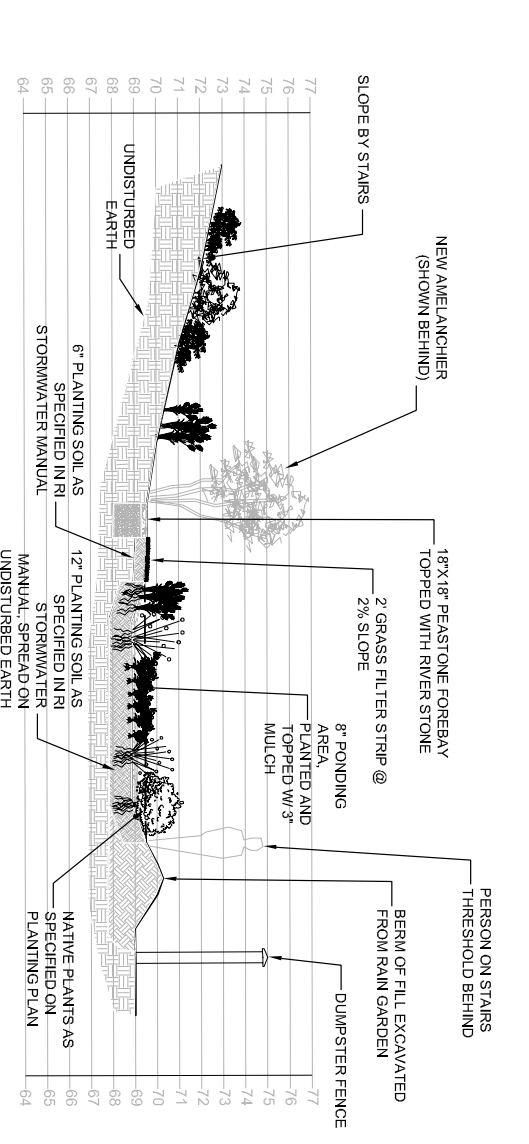
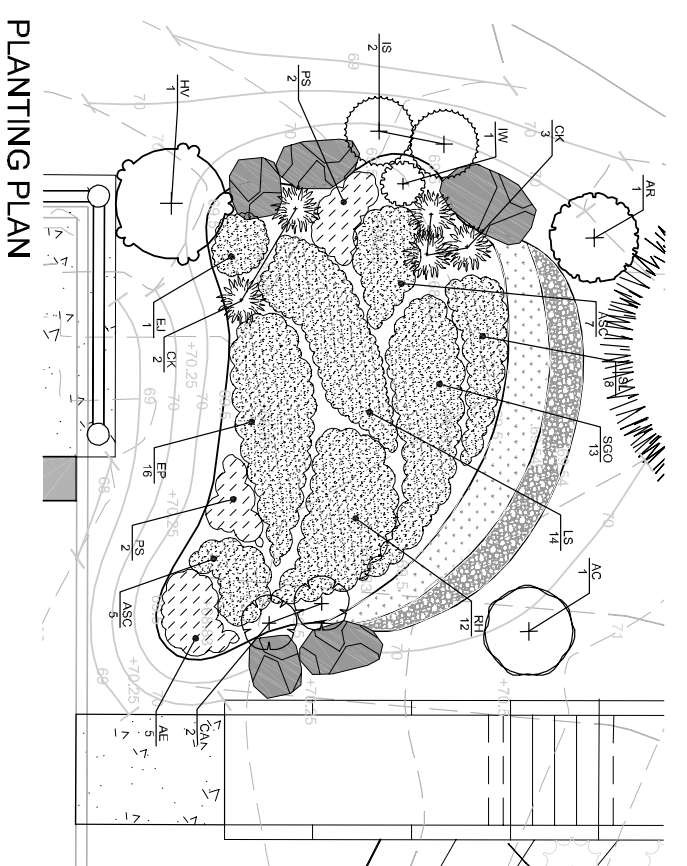
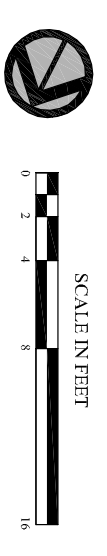


**COLOR CONCEPT FOR MANTON HEIGHTS RAIN GARDEN**



**SECTION A-A' THROUGH RAIN GARDEN**

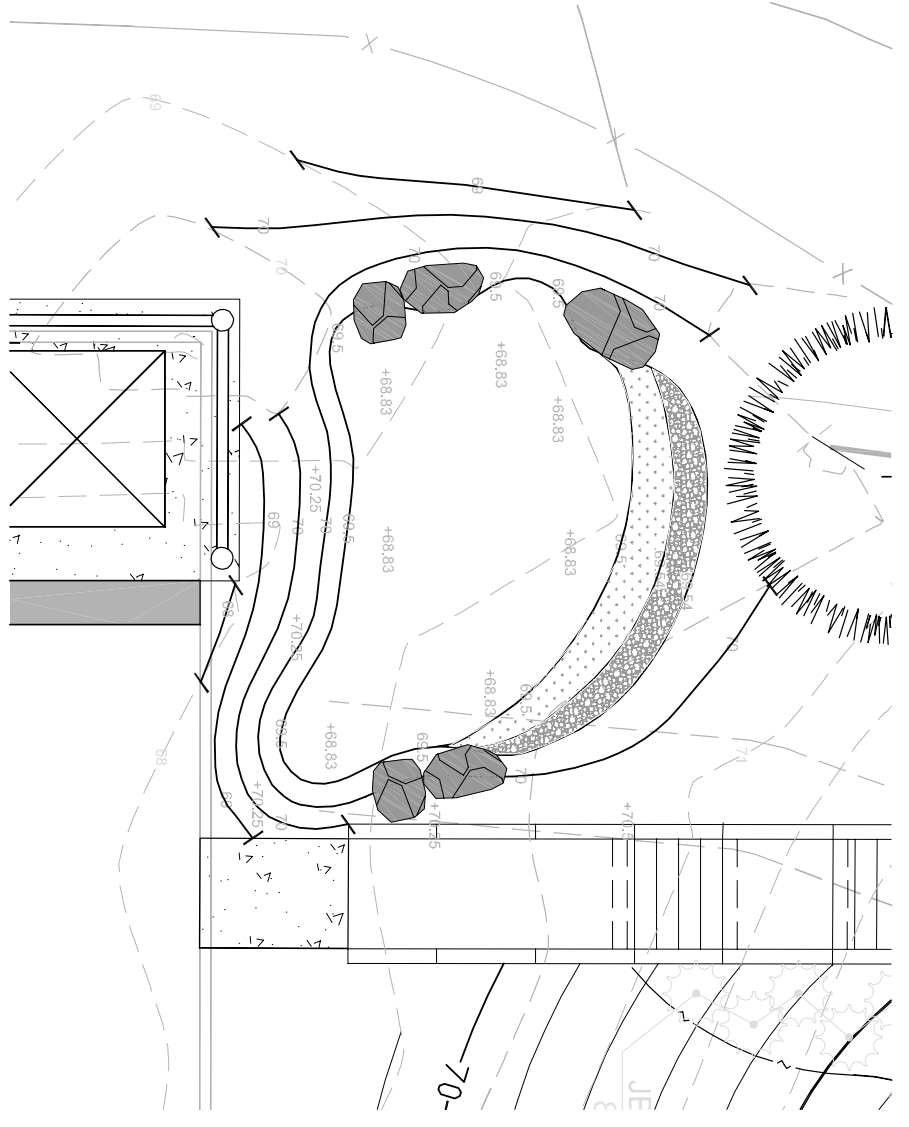


**PLANTING PLAN**

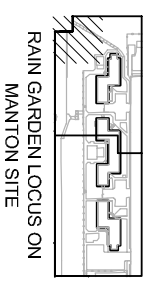
**PLANT SCHEDULE RAIN GARDEN**

TREES	QTY	BOTANICAL	COMMON	SIZE	REMARKS
AC	1	Azalea canadensis	Shadbush	4 - 5 HI	B&B Heavy
AR	1	Aronia arundifolia	Red Chokeberry	4 - 5 HI	B&B Heavy
HV	1	Hammamelis virginiana	Common Witch Hazel	4 - 5 HI	B&B Heavy
CK	5	Calluna sibirica	COMMON SUMMERSWEET	2 - 3 HI	CONTAINER
CA	2	Celtis occidentalis	Summersweet	2 - 3 HI	CONTAINER
IS	2	Ilex glabra 'Sinarocok'	Inkberry	2 - 3 HI	CONTAINER
IW	1	Ilex verticillata	Winterberry	2 - 3 HI	CONTAINER
ASC	12	Asclepias tuberosa	COMMON BUTTERFLY MILKWEED	1 gal@ 18" oc	
AE	5	Aster novae-angliae	New England Aster	1 gal@ 18" oc	
EP	16	Echinacea purpurea	Purple Coneflower	1 gal@ 18" oc	
EL	1	Eupatorium maculatum	Joe Pye Weed	3 gal@ 36" oc	
LS	14	Liatris spicata	Spike Gayfeather	1 gal@ 18" oc	
PS	4	Panicum virgatum	Switch Grass	2 gal@ 30" oc	
RH	12	Rudbeckia hirta	Black-eyed Susan	1 gal@ 20" oc	
SL	8	Schizachyrium scoparium	Little Bluestem Grass	1 gal@ 18" oc	
SGO	13	Solidago sempervirens	Seaside Goldenrod	1 gal@ 20" oc	

**NOTE:**  
**Total Rain Garden size:** 20' x 15'-6" including peastone diaphragm/grass filter strip forebay = 310 sf  
 Garden itself = 20' x 12' x 20" (8" ponding area + 12" planting medium, 3" mulch placed on medium)  
 Grass filter strip = 20' x 2'  
 Peastone diaphragm = 20' x 18' x 15" (+3" washed river stone for top)  
 According to the rain garden sizing formula in the current Rhode Island Stormwater Manual, this will handle runoff from approx. 2500 sq ft of impervious surface at the end of Fairfield and Richard Roads.



**GRADING PLAN**



**GLA** Gates, Leighton & Associates, Inc.  
 LANDSCAPE ARCHITECTURE  
 865-A Waterman Avenue, East Providence, Rhode Island 02914  
 Phone:(401)438-2071 Fax:(401)434-7511 Website:www.glaa.com

Job No: P-1046D  
 Dwg No: LP-107-RG  
 Drawn: aels  
 Checked: ae  
 Issued: March 2011

Revisions:


Not Issued For Construction

**RAIN GARDEN**  
**Manton Heights**  
 Providence Housing Authority  
 Providence, Rhode Island