



**"Advocating for responsible stewardship
of land and natural resources in
landscaping and horticultural practices."**

December

ELA had a busy year educating hundreds of people on many aspects of ecological care of landscapes. In 2014 ELA hosted the first Large-scale Landscapes Symposium, saw its 20th annual conference, introduced Members' Receptions, held Roundtable discussions and its 5th Season's End Summit, and resumed its collaborative webinar series. And 2015 starts strong with a [January 25th Symposium](#) that explores ecological hardscapes from lighting to pavement and everything surrounding. This issue of the newsletter includes two hardscape topics: Heather Heimarck writes about Boston Architectural College's "green alley" and Symposium keynote speaker Jesse Harris takes a detailed look at pervious surfaces.

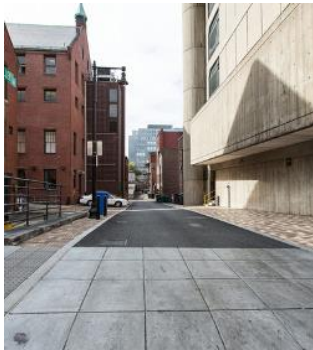
ELA thanks our Symposium sponsor [Ideal Concrete Block Company](#) for support of this event. We hope to see you there. *MS*



Ecological Hardscape Choices for Today's Landscapes

by Jesse Harris

Today's landscape professionals have many choices when it comes to choosing ecological hardscapes for their designs. Proper design, installation, and maintenance are critical to their effectiveness. The pavement choices are typically grouped into three categories: rigid, flexible, and unit pavements. [Read the article.](#)



The Green Alley, the Water Table, and the Ostrich

by Heather Heimarck

Boston Architectural College's "green alley" was built with the intention of creating a replicable model that would ameliorate negative environmental impacts caused by impervious urban streets and high building density. One year later, the green alley is effectively returning gallons of stormwater to the water table while maintaining the area's historic character. [Read the article.](#)



LandscapePerformance.org: Resources to Demonstrate Impact

by Heather Whitlow

The Landscape Architecture Foundation (LAF) is pleased to announce the launch of its new [LandscapePerformance.org](#) website. With 90 Case Study Briefs, over 100 Fast Facts, and dozens of Benefits Toolkit calculators, LandscapePerformance.org is sure to become your go-to place to find design precedents, show value, and make the case for sustainable landscape solutions. [Read the article.](#)



Eco-Answers from the Pros

ELA members have spent hundreds of hours learning the best ecological solutions to problems in the landscape. You can benefit from all that accumulated knowledge by posing a question to our experts. If you are stumped by a problem in your landscape or are looking for a second opinion on a potential solution, ask ELA's Eco-Pros. Send your question to ela_new@verizon.net. And if you need someone with boots on the ground for follow-up help, refer to the listing of [ELA Professionals](#).

Winter Moth Follow Up

Last month, the Eco-Pros offered advice on controlling winter moth. An alert reader in Wellesley, MA brought to our attention an outreach effort in that town advising against spraying. Our Eco-Pros respond. [Read the article.](#) Find additional information about winter moth in the Gleaning posted below.

Gleanings



Mobilizing Volunteers to Care for and Study Our Lands and Waters

Land trusts, communities, agencies, schools, businesses, and other entities have a new resource to help connect interested volunteers with stewardship projects on conservation lands. The Stewardship Network: New England based at the University of New Hampshire Cooperative Extension has a website at newengland.stewardshipnetwork.org that makes it easier for people to volunteer and for organizations and communities to post nature-based volunteer projects and training.

"Our goal is to connect more citizens to the outdoors through meaningful, well-organized land stewardship and environmental research volunteer projects," says Malin Clyde, the Program Manager for The Stewardship Network: New England. "We want to make it easier for people to volunteer on behalf of nature, and insure that when they do, the projects are well-organized, inspiring, and above all, fun!" This photos shows the Buckthorn blitz with volunteers at UNH College Woods, Durham, NH. Photo by Malin Clyde.

Anyone can join the Network by signing up on the website for weekly e-bulletins detailing upcoming on-the-ground stewardship and citizen science projects, including those related to invasive plants, trails, habitat restoration, skill-building, and much more. The Stewardship Network: New England was launched in New Hampshire, but looks to partner in other regions of New England in the future.



Directory of "Quiet" Landscape Professionals

In order to promote ecological and environmentally responsible landscape practices, the Massachusetts based nonprofit, [Quiet Communities](#) is compiling a nationwide resource directory. Quiet Communities is in search of landscape professionals who provide quiet and environmentally friendly landscape maintenance (for example: companies that provide landscape services using rakes, brooms, and sweepers instead of leaf blowers) for commercial and residential properties throughout the United States.

If you or any of your colleagues offer these services, please complete the [Quiet Communities survey](#) and add your company to the nationwide directory.



Winter Moth Survey

It's that time of year when [winter moths](#) and other related species show up at porch lights across Massachusetts, sometimes congregating by the hundreds. There are other similar-looking native moths active at this time of year, such as the Bruce spanworm moth and the fall cankerworm moth, but they are typically not seen in such large numbers.

If you see winter moths, Massachusetts Department of Agricultural Resources would like to hear from you. You can report easily using an [online survey](#). The information you share will help assess the distribution of this invasive pest in MA.



Male winter moth resting on the side of a house at night.



Female winter moth found on the trunk of a tree. Note the tiny, vestigial wings; female winter moths cannot fly.

Events to Note (listings indicate local time unless otherwise noted)

December 31 - [The Pursuit of Sustainable Living](#) deadline for presenters.

January 7 **ELA Webinar**→[Tools and Equipment for the Management of Invasive Species in Natural Areas](#); 1:00-2:00pm EST.

January 8-9 - [Evolving Strategies for Evolving Landscapes](#); Montgomery County Community College, Blue Bell, PA.

January 10 - [NOFA/Mass Winter Conference](#); Worcester State University, Worcester, MA; 7:30am-7:30pm.

January 12 **ELA Webinar**→[25 Steps to Business Success](#); 3:00-5:00pm EST.

January 14-15 - [Growth, Effectiveness, Management/Horticultural Business Seminars Level 1](#); Charlestown, RI.

January 14, 21, 28 & February 4 - [Community Training in Ecological Design](#); various NH locations.

January 15-18 - [California Native Plant Society Annual Conference](#); San Jose, CA.

January 15-16 - [Ecological Landscape Symposium - Evolving Strategies for Evolving Landscapes: Beyond the Garden Bed](#); Connecticut College, New London, CT.

January 21 **ELA Event**→[Building the Ecological Landscape: Materials, Technology, and Design](#); Stoneham, MA; 8:00am-5:00pm.

January 29 **ELA Webinar**→[Xeriscape: Whole System Planning and Practice](#); 1:00-2:00pm EST.

February 4-6 - [New England Grows](#); Boston, MA.

February 5 - [North Atlantic Fire Science Exchange Field Trip](#); Mashpee and Buzzards Bay, MA.

February 6 - [Southeastern MA Regional Conservation Forum](#); Mashpee and Buzzards Bay, MA.

February 11 **ELA Webinar**→[Edible Native Plants for Your Landscape](#); 7:30-8:30pm EST.

February 12 - [Growth, Effectiveness, Management/Horticultural Business Seminars Level 2](#); Charlestown, RI; 8:00am-5:00pm.

February 25-26 - [ELA Conference & Eco-Marketplace](#); Springfield, MA.

March 6-7 - [Ithaca Native Landscape Symposium](#); Ithaca, NY.

March 7 - [MAC 14th Annual Winter Conference](#); Palmer, MA; 9:00am-3:30pm.

March 9 **ELA Webinar**→[Water Conservation: Landscape Design Strategies](#); 5:30-6:30pm EST.

March 18 **ELA Event**→[The Orchard Ecosystem](#); Wellesley, MA; 12:30-3:30pm.

March 25 **ELA Webinar**→[Low-Impact Construction for Living Landscapes](#); 5:30-6:30pm EST.

March 26 - [Pollinator Health for Agriculture and Landscapes](#); UMass Amherst, MA. Save the date.

April 23 **ELA Event**→[ELA Member Reception](#); SEMPBA Community Center, Plymouth, MA; 5:30-7:30pm.

Each author appearing herein retains original copyright. Right to reproduce or disseminate all material herein, including to Columbia University Library's CAUSEWAY Project, is otherwise reserved by ELA. Please contact ELA for permission to reprint.

Mention of products is not intended to constitute endorsement. Opinions expressed in this newsletter do not necessarily represent those of ELA's directors, staff, or members.

We hope that you enjoy this edition of the ELA newsletter and welcome your comments at ela.info@comcast.net. *Maureen Sundberg, ELA Newsletter Editor*



The International Biochar Initiative (IBI) is searching for an Executive Director. This is an excellent position for a collaborative leader with demonstrated experience in fundraising and growing an organization, and the drive, tenacity, and independence to thrive in and lead a young and evolving international nonprofit.

For more information after reviewing the [full position description](#), please email [Olivia Mahony](#) or call 415-421-4213 Extension 27.



Whether you are located in the area of our upcoming events or in some distant landscape, you are invited to participate in ELA collaborations and discussions by joining the Ecological Landscape Alliance discussion group on LinkedIn. The ELA discussion group is open to both ELA members and non-members from around the world and participation is growing each week.

Through these discussions you can share information, get answers to landscape problems, and learn new perspectives on challenging ecological issues. Joining LinkedIn is free and it is easy to join. [Join the ELA LinkedIn Discussion](#). We look forward to hearing from you soon!

